

## PRECISION AG TUTORIAL

# ACTIVATING RANGEPOINT ON FM1000™ DISPLAYS

Welcome to the activation guide for Trimble's RangePoint RTX correction service. This guide is unique to the FM1000™ Integrated Displays. Other guides are available for the FM750™ Displays. Look for them on the Subscription Confirmation screen in the RangePoint Activation Portal.

Before we get started, you will need a copy of the activation confirmation email that contains your password (password=passcode). You also must have firmware version 7.2 installed on your device. If you are not ready with all of these required items, please complete these steps before continuing.

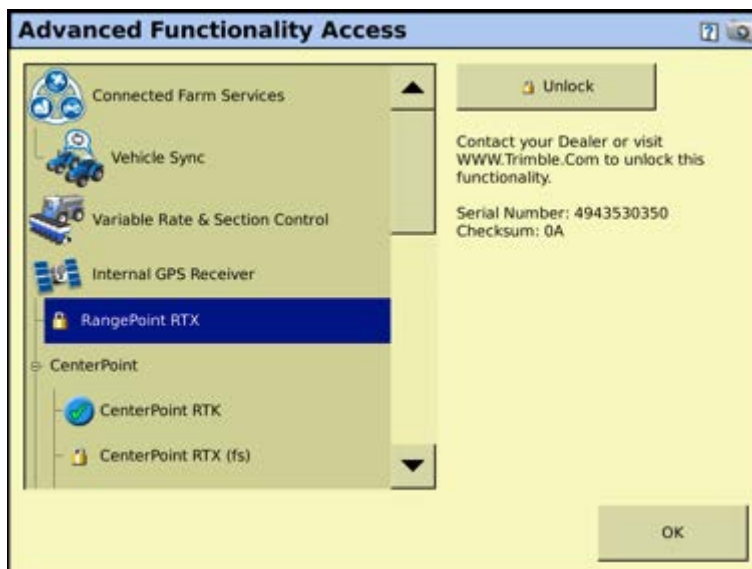
To begin the RangePoint RTX activation process, you must first unlock this feature on your FM1000™ Integrated Display.

### UNLOCKING THE RANGEPOINT RTX CORRECTION SERVICE ON THE FM1000™ DISPLAY

From the Home screen, select the Unlocks button.



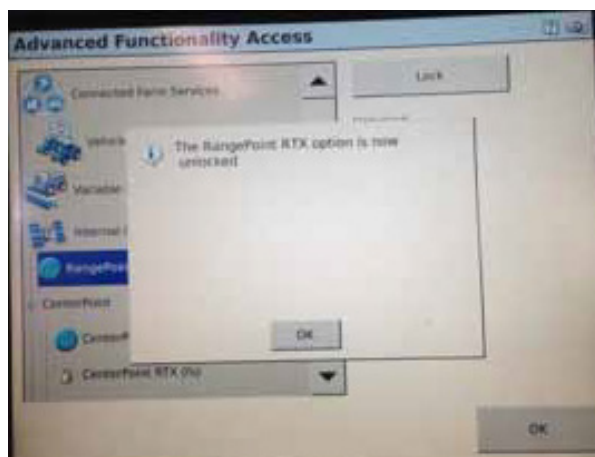
You will now see the Advanced Functionality Access screen. On this screen, select RangePoint RTX and then select the Unlock button.



A virtual keyboard will open so you can enter the password that was emailed to you. The password for the FM-1000 is case sensitive and does include hyphens, so please enter the password exactly as it is written in your email.

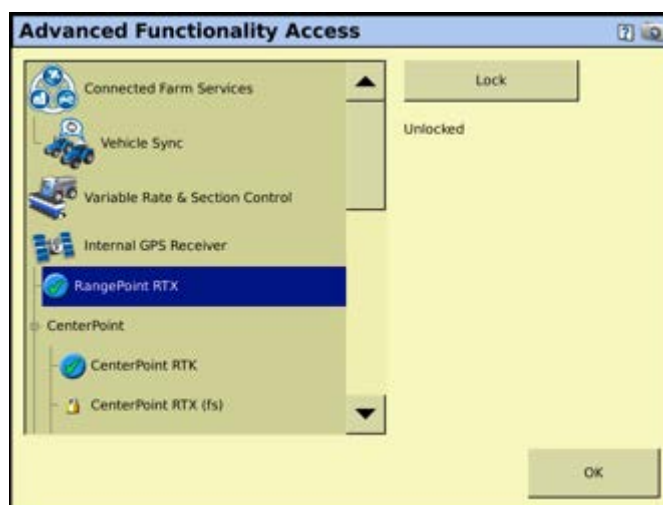


Once you have entered the password, select the OK button. You should see a pop-up window telling you that the RangePoint RTX service was successfully unlocked. Select the OK button to be returned to the Advanced Functionality Access screen.



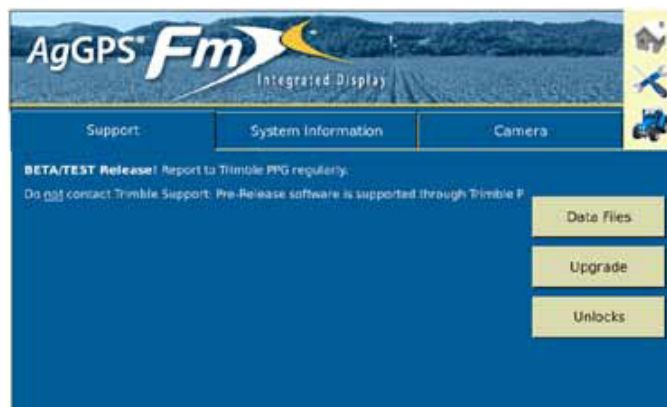
If the password was entered incorrectly, you will see a pop up window telling you that the password entered was not valid. Select OK and re-enter the password exactly as you see it written in your email. If it still doesn't work, please contact your local O'Connors Team. Contact information can be found at the end of this guide.

Next, you should confirm that the RangePoint RTX service is unlocked and working, by looking for a green check mark next to the RangePoint RTX option on the Advanced Functionality Access screen. If the green check mark is there, you have successfully unlocked the service. Select the OK button to return to the Home screen.

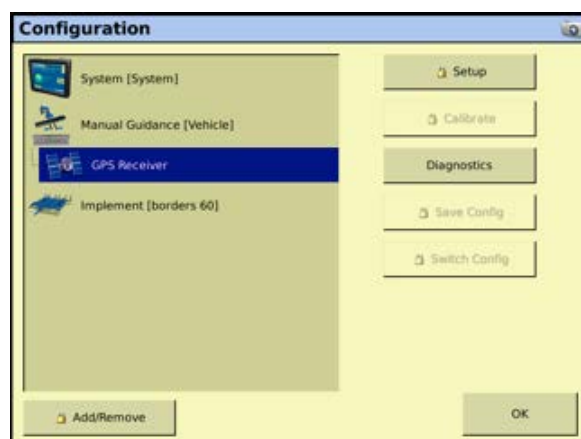


## CONFIGURING THE RANGEPOINT RTX SERVICE ON YOUR FMX INTEGRATED DISPLAY

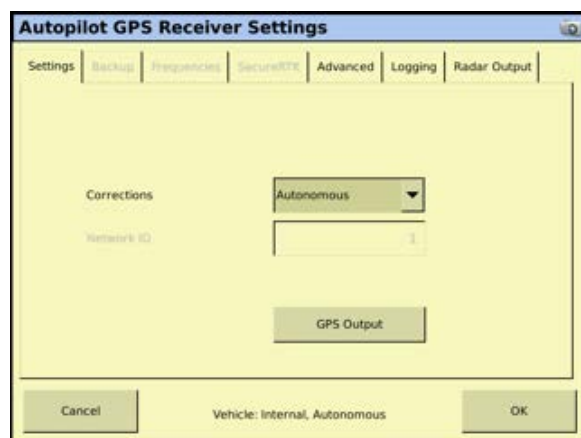
Now that you have unlocked the RangePoint RTX service, you will need to configure your service by setting the correction source, frequency, and baud rate. From the Home screen, select the Configuration icon to be taken to the Configuration screen.

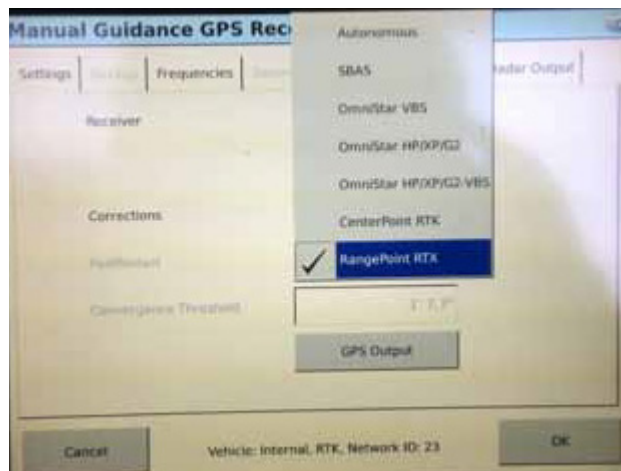


On the Configuration screen, select GPS Receiver from the list and then select the Setup button. This will take you to the Autopilot GPS Receiver Settings screen (if you have the AutoPilot feature) or to the GPS Receiver Settings screen.

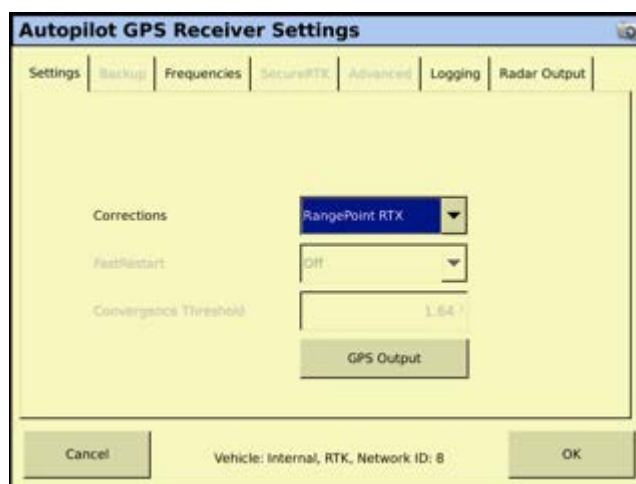


On the Settings tab, select the Corrections dropdown arrow and choose the RangePoint RTX option.

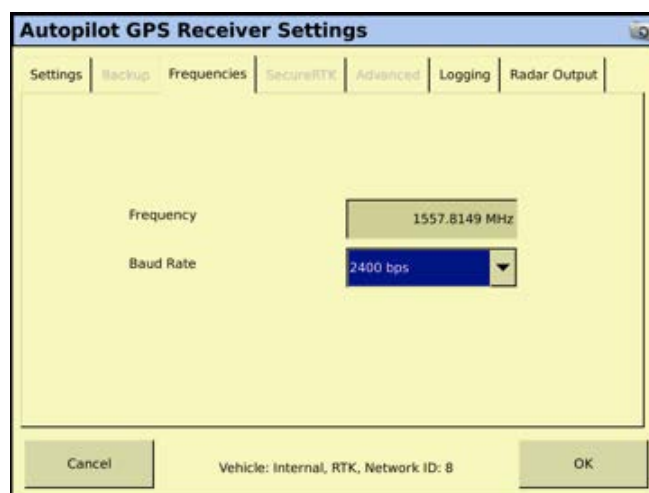




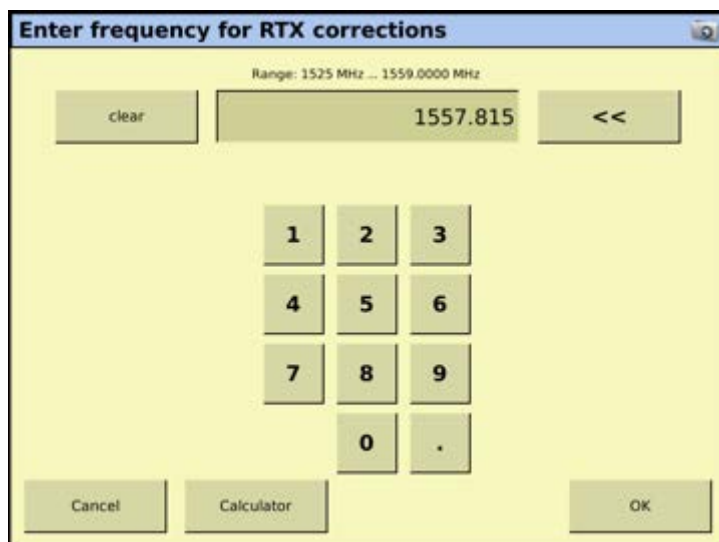
RangePoint RTX should be highlighted on the screen.



You will see that the Frequencies tab has become bold. Select the tab so that you can change your Frequency. Now, select the Frequency field.

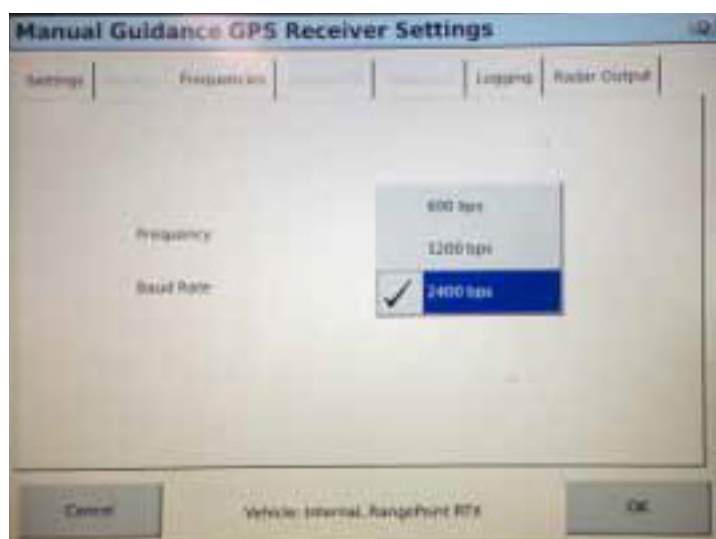


When you select this field a virtual keyboard will open so that you can enter the Frequency based on your location. RTXAP (Asia/Pacific) 1539.8325 MHz at 600 baud

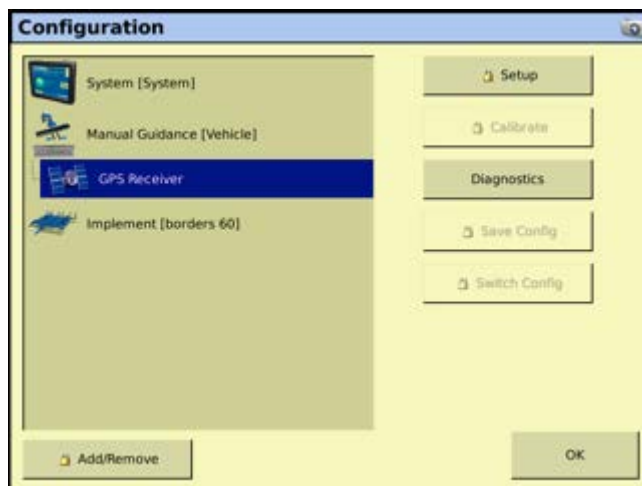


After you have entered your Frequency, select the OK button.

Now, you must set your Baud Rate. Select the dropdown arrow next to Baud Rate and choose the baud rate for your location. RTXAP (Asia/Pacific) 1539.8325 MHz at 600 baud

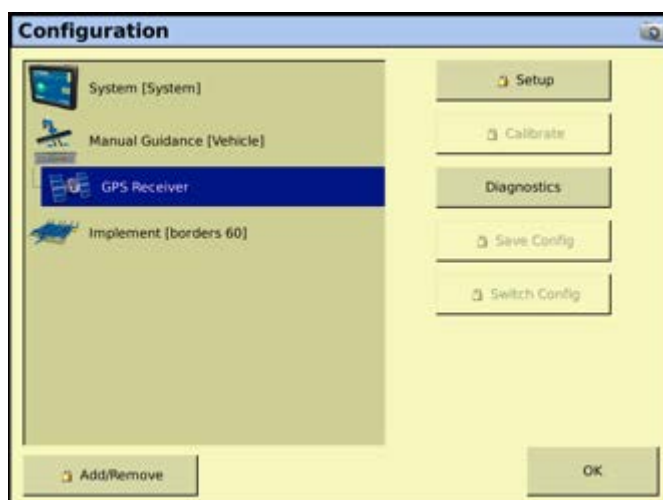


Once you have selected your Baud Rate, elect the OK button, to save your settings and return to the Configuration screen.



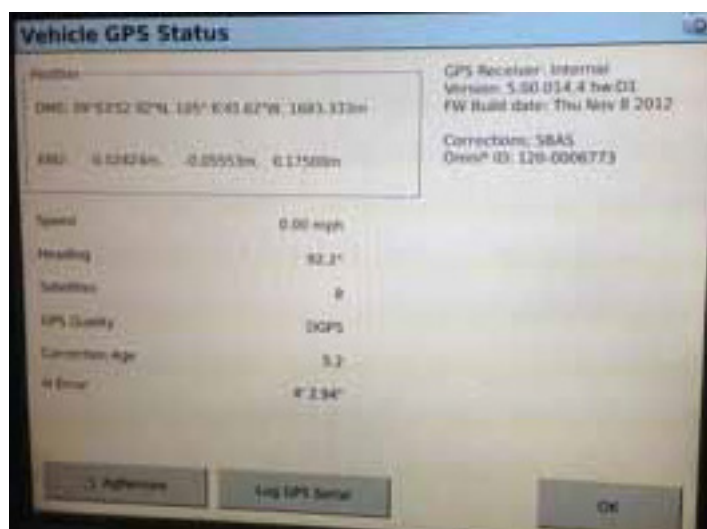
## VERIFYING THE RANGEPOINT RTX CORRECTION SERVICE

Now, we will verify that the RangePoint RTX correction service is configured correctly.





If Corrections says RangePoint RTX, your service is active and working correctly. Convergence can take up to 5 minutes in a clear sky environment. Select the OK button to be taken to the Configuration screen. From that screen, select the OK button again to return to the Home screen.



You are now ready to proceed with your regular operations. If you need any additional assistance with your RangePoint RTX correction service, please below contact details.

**BIRCHIP** 03 5492 2311  
**BORDERTOWN** 08 8752 1311  
**COROWA** 02 6033 1666

**HORSHAM** 03 5382 1727  
**SHEPPARTON** 03 5821 4555  
**WARRACKNABEAL** 03 5398 1877

[oconnorscaseih.com.au](http://oconnorscaseih.com.au)

Trimble Australia - 1 800 802 573 Australia toll free - [au\\_corrections@trimble.com](mailto:au_corrections@trimble.com)  
Version 2.6, 11 April 2013 © 2013 Trimble Navigation Limited. All rights reserved.