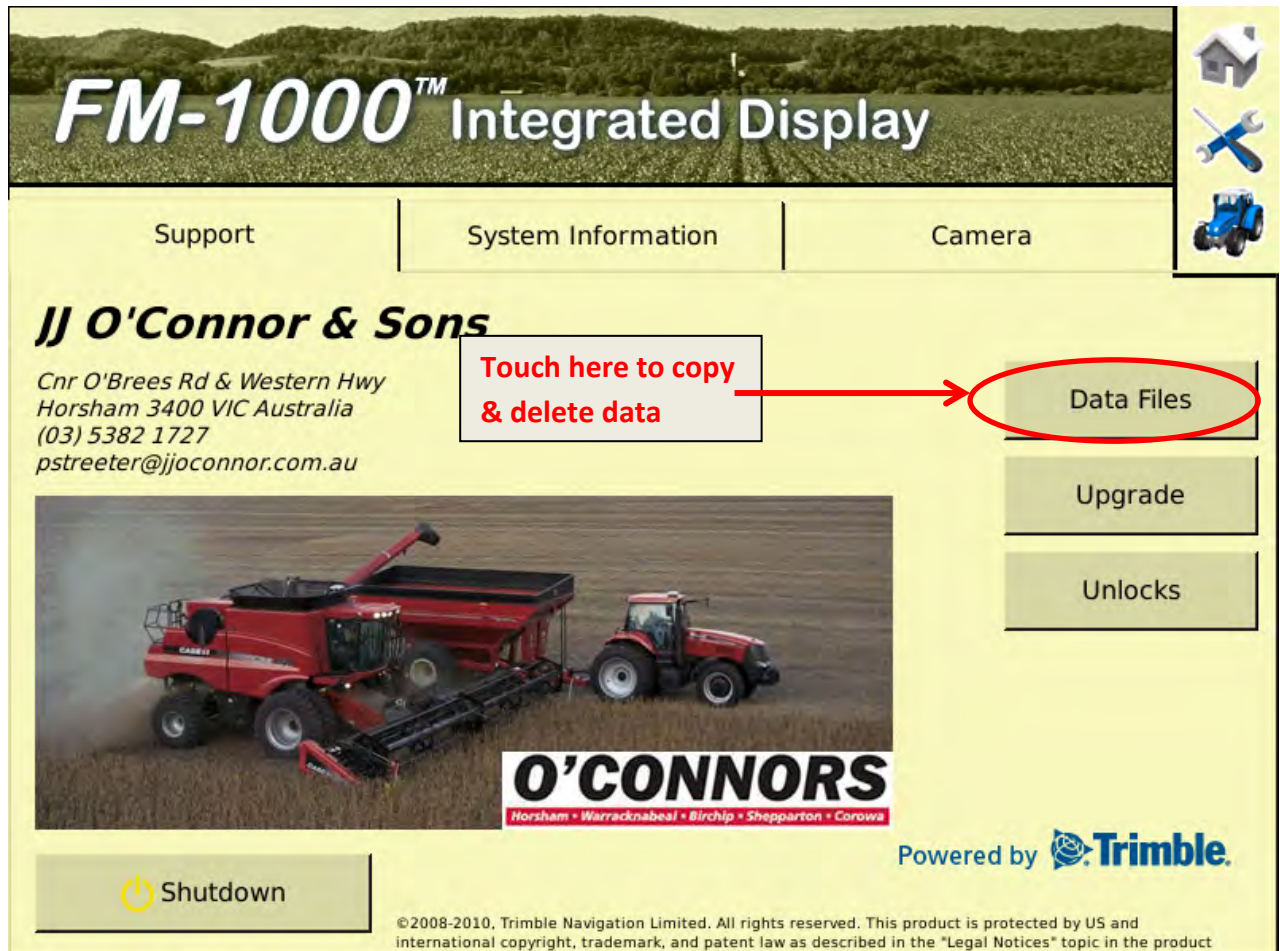


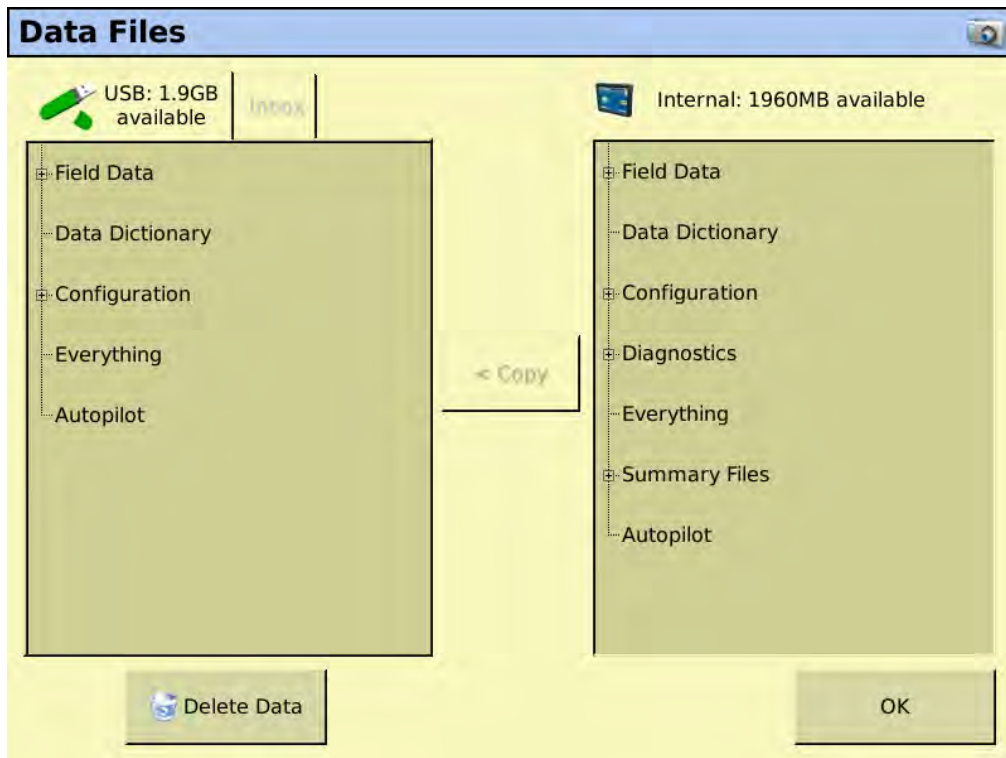
Working With Data

Copying Data

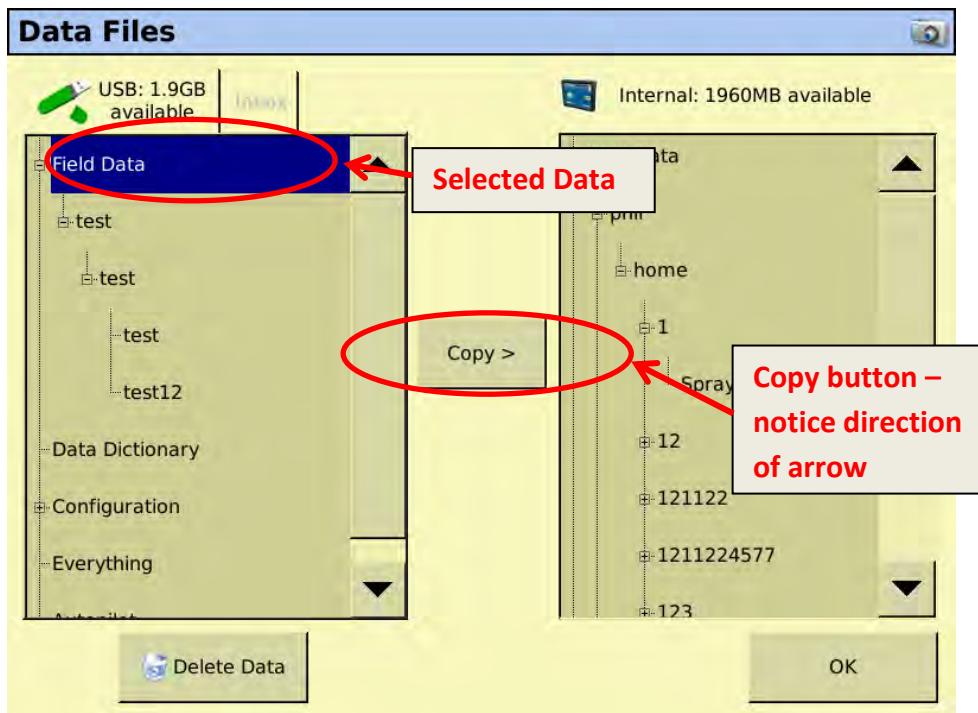
To copy data – from the home screen – touch on the Data Files button



This will bring up the following screen



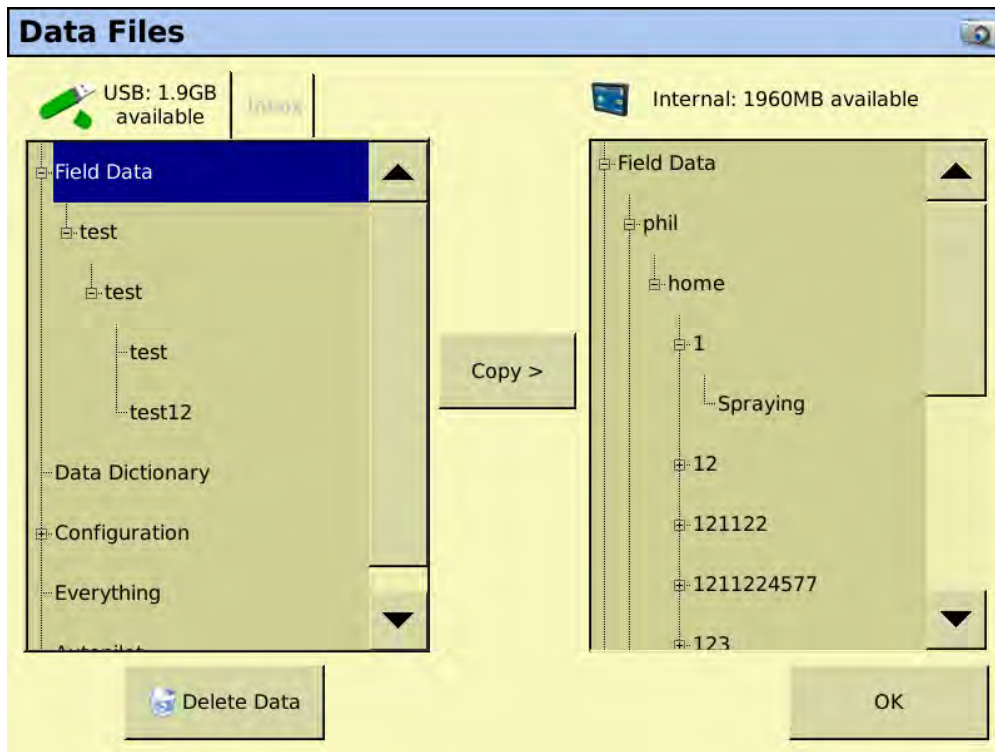
On the left column is the USB stick – in the right column is the internal memory of the screen. If you want to bring something from the USB stick, highlight it and press copy and it will be copied from the LHS to the RHS and visa versa if you want to copy from the internal memory and put it onto the USB stick. If you want just a specific file, highlight just that file and then press copy.



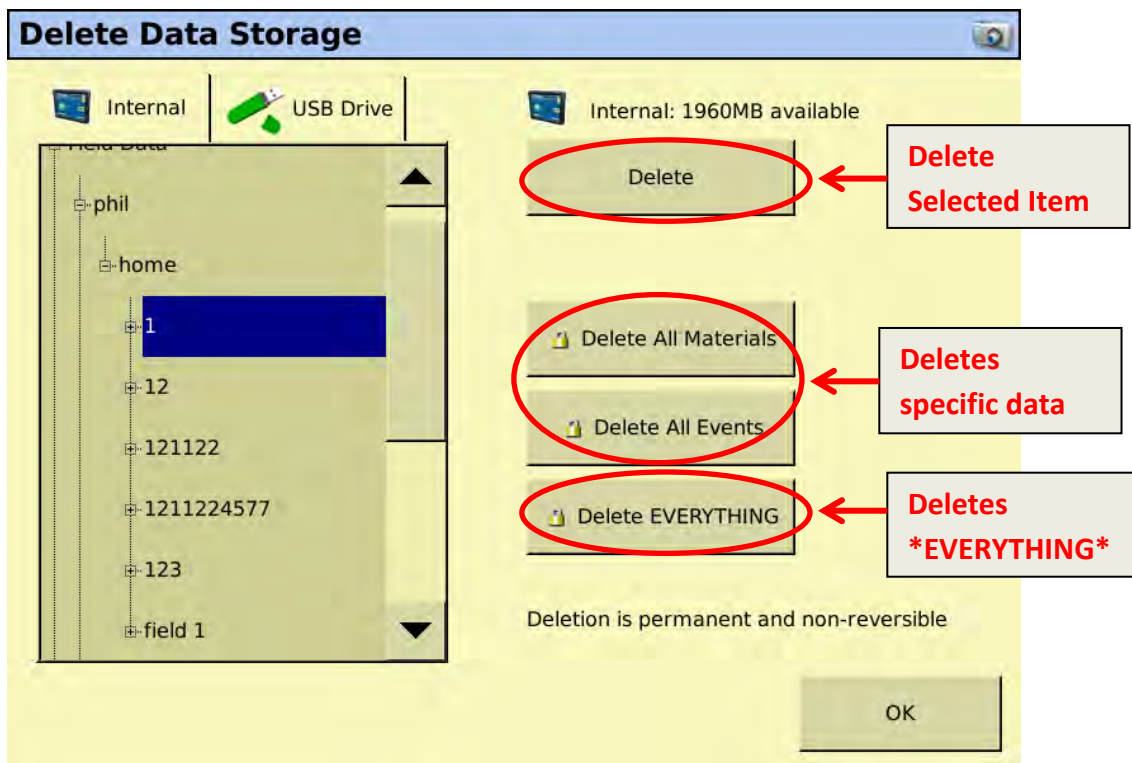
In this case – Field Data has been highlighted. This means that everything under field data (connected by a line) will be copied over. If you just wanted test12 field data, you would just highlight that name and then touch copy.

Deleting Data

If you want to delete any data, press on the “Delete Data” tab and it will take you to the delete data page. Just pressing the button doesn’t delete the data; you will need to select it on the next page.



Here is where you select your data to be deleted. Ensure you choose carefully.....



Recommended USB sticks

USB sticks are marketed everywhere and some of them quite cheap. Ensure that you buy a quality one that doesn't have any software on it. Some sticks are manufactured to do specific functions when they load into your computer. ie some set up an icon in your system tray of the computer that makes it easy to eject the stick. Obviously, a USB stick trying to load software into your FM1000 that was not designed for this would not be a good idea.