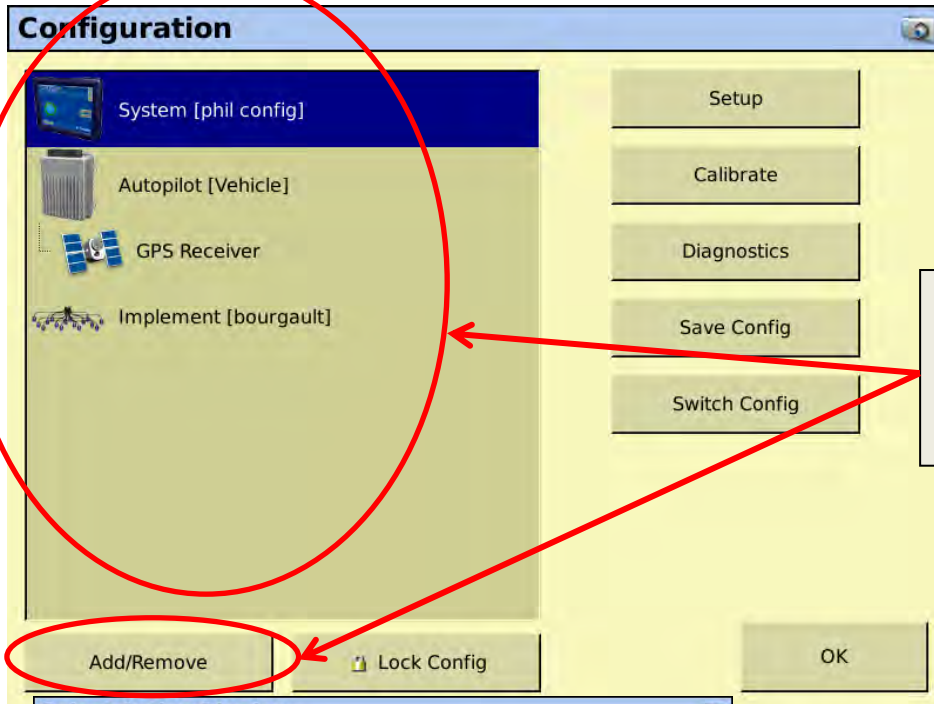


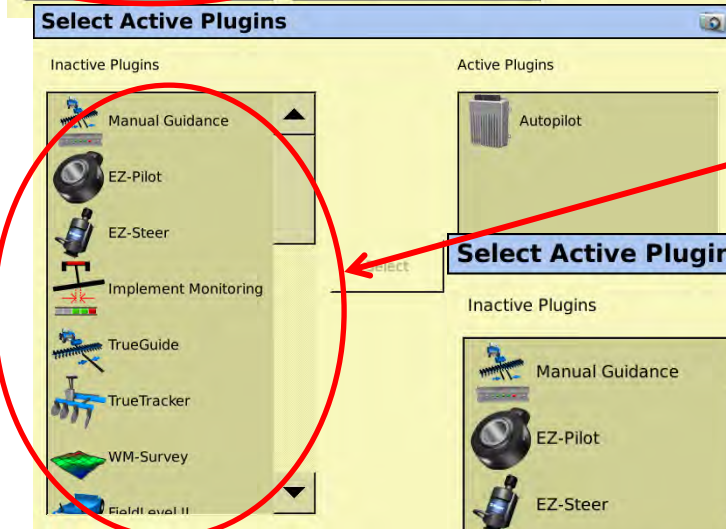
# Adding Cameras

To install a camera and use it on your screen, you need to install a Plugin. To do this, go to your configuration tab from the home screen.

Touch on the Add/Remove button



No cameras installed in here, so touch on Add/Remove button to install them

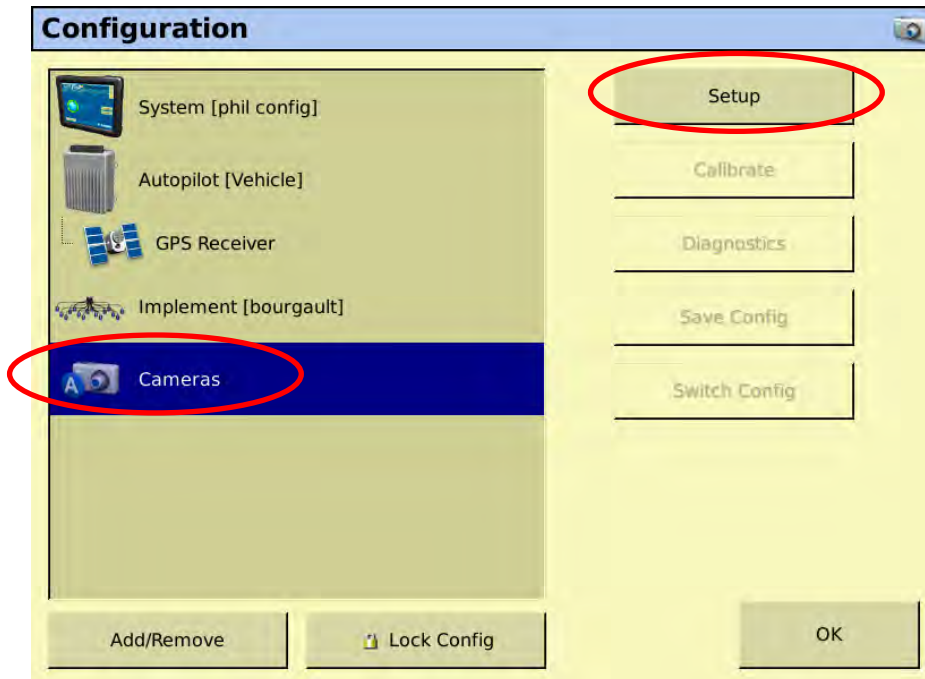


Scroll down the list of Inactive Plugins on the LHS and highlight the camera



Touch on the Select button and it will transfer to the RHS column – meaning that it is now Active

Then you will need to configure the camera. Highlight the camera and then touch Setup.



Number 1 tab = Port A

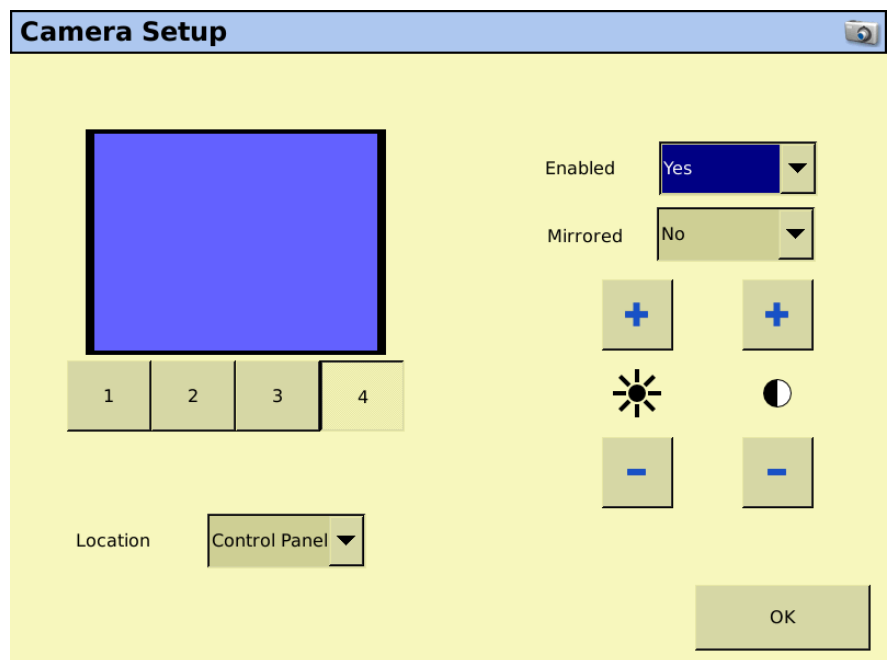
Number 2 tab = Port B

Number 3 tab = Port C

Number 4 tab = Port D

Select the Port and then check to ensure it is enabled

You may have to adjust your contrast and brightness if you can't see the picture



The location selector just enables you to position the picture on either the LHS or RHS of the screen. The LHS is the Main Viewer and will open up in the full screen whereas the Control panel is a small picture located on RHS.

Ensure that you only enable the cameras that are installed. ie – if there is no camera in port C ensure that when button 3 is selected Enabled is set to No otherwise it will just show a blank screen when you look at your picture.