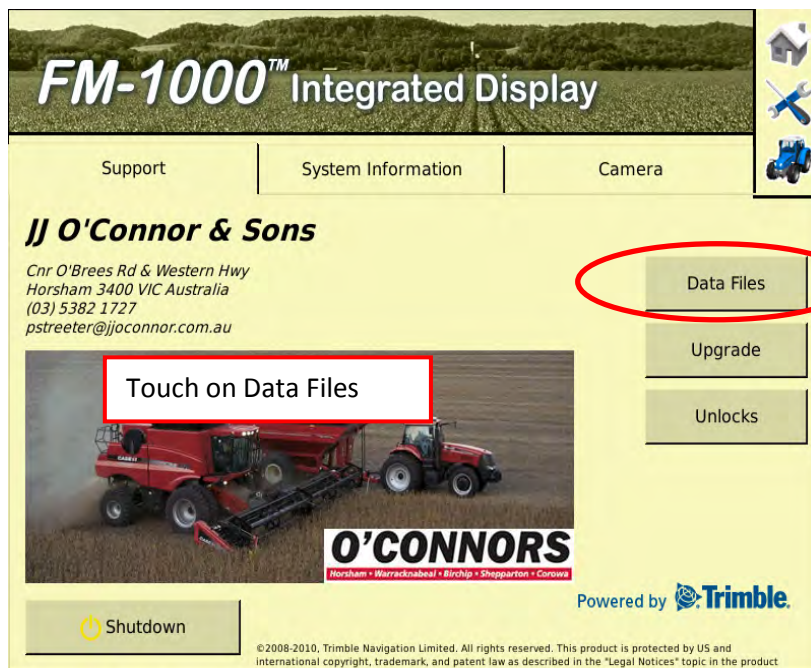
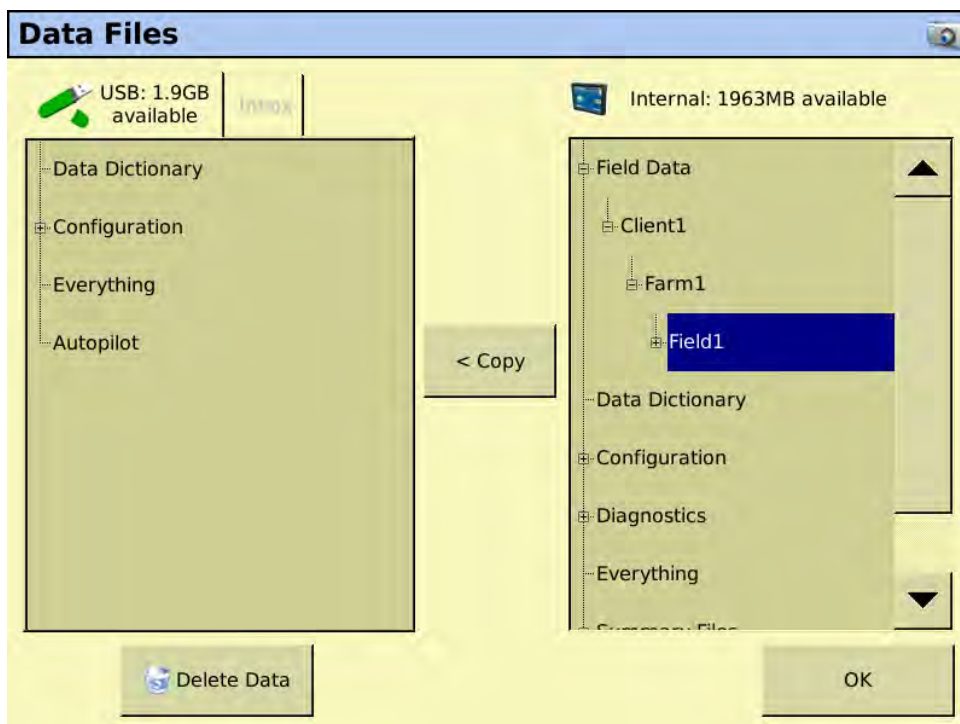


Deleting Point, Line and Area Features

To delete a point, line or an area feature from within your field, you will need to delete out a couple of files from within your field. Note that this will delete all features (whether you delete point, area or line) from the field and not just one selected point. Please ensure you backup your system before modifying and deleting files – just in case something does go wrong.



Touch on the “data files” button



Drill down till you find your field that you want to delete points etc from and highlight it

Touch the copy button to transfer the field to your USB stick installed at the rear of the screen

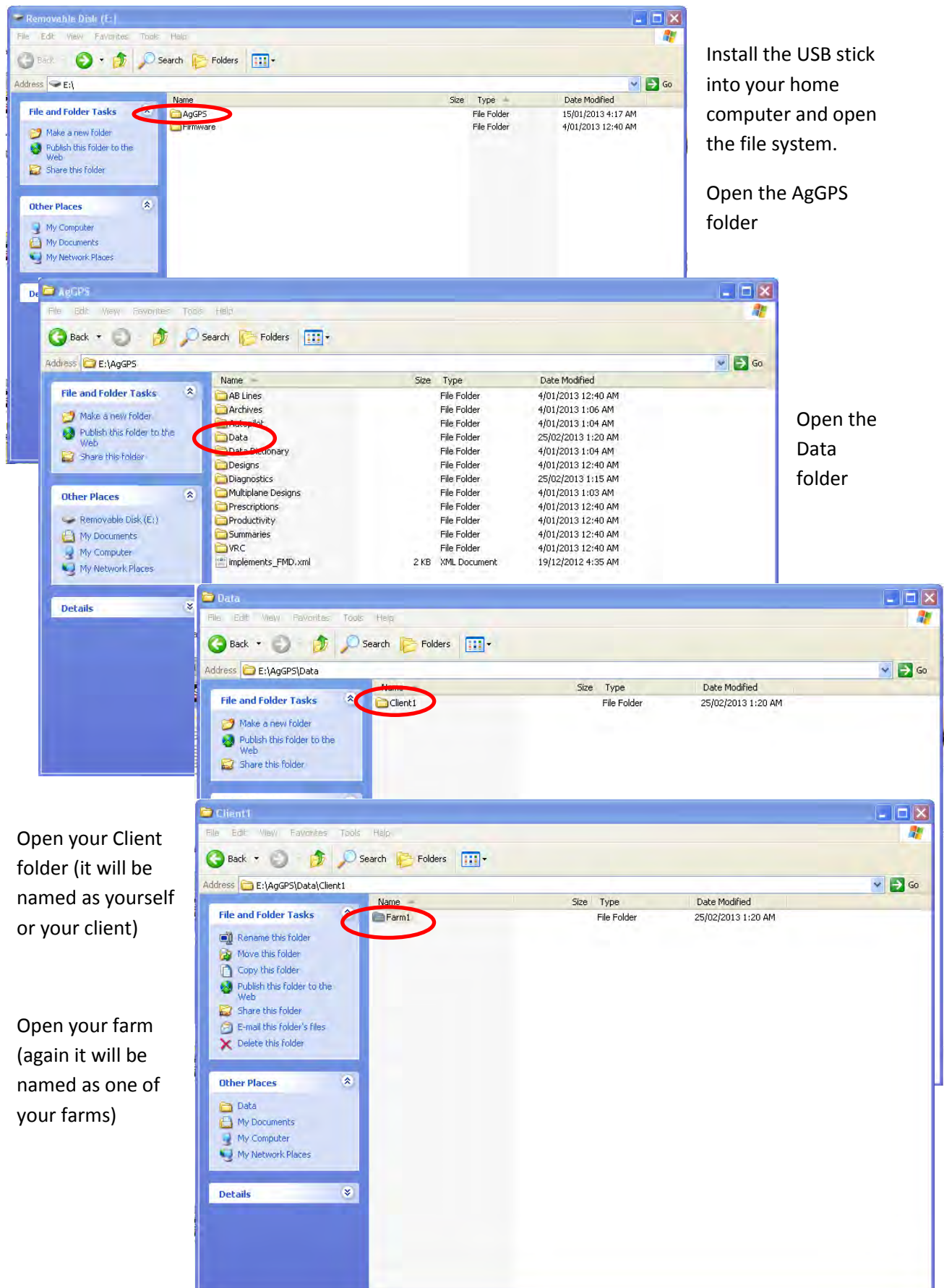
Install the USB stick into your home computer and open the file system.

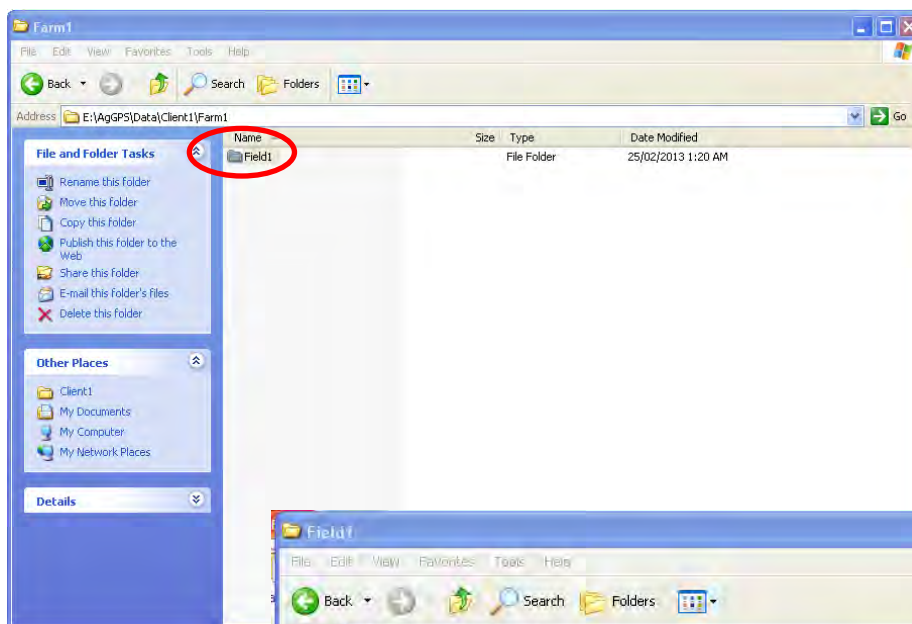
Open the AgGPS folder

Open the Data folder

Open your Client folder (it will be named as yourself or your client)

Open your farm (again it will be named as one of your farms)

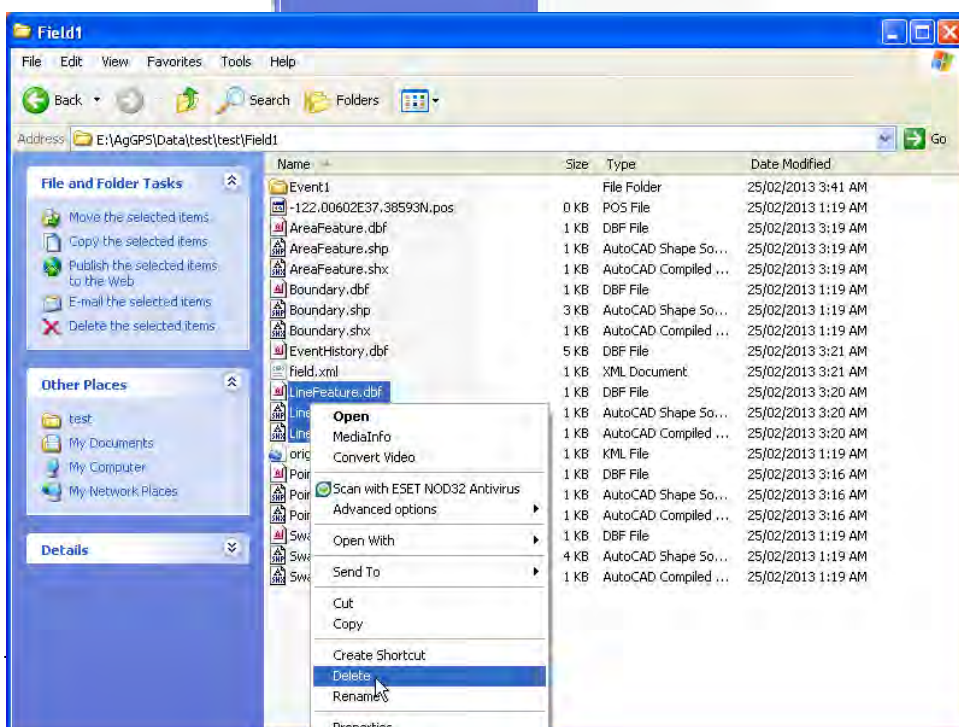
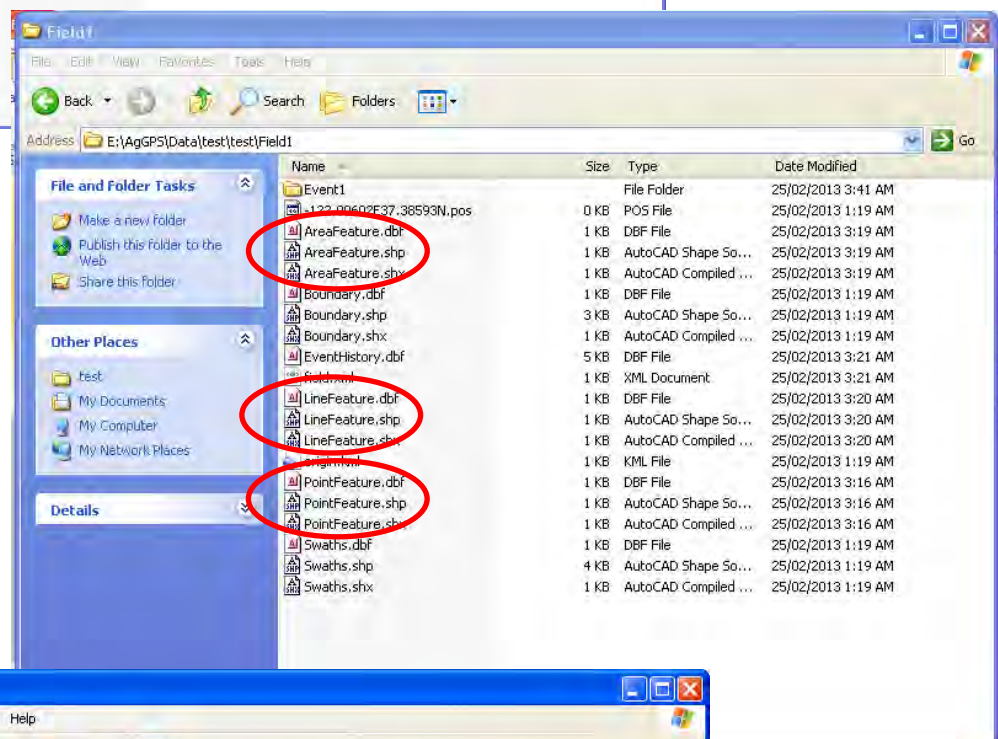




Open the field that you want to delete out point, area, line features

Highlight the 3 files that relate to what you want to delete – line, point or area

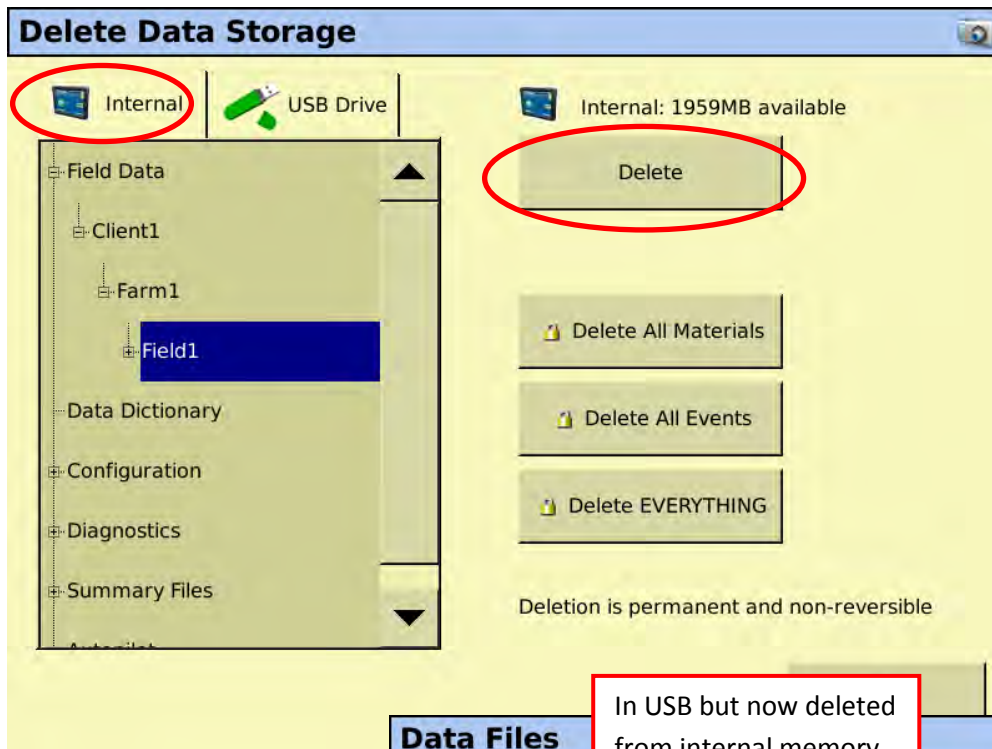
If you only want to delete lines – only delete the 3 line feature files



Once highlighted – right click on them and select delete.

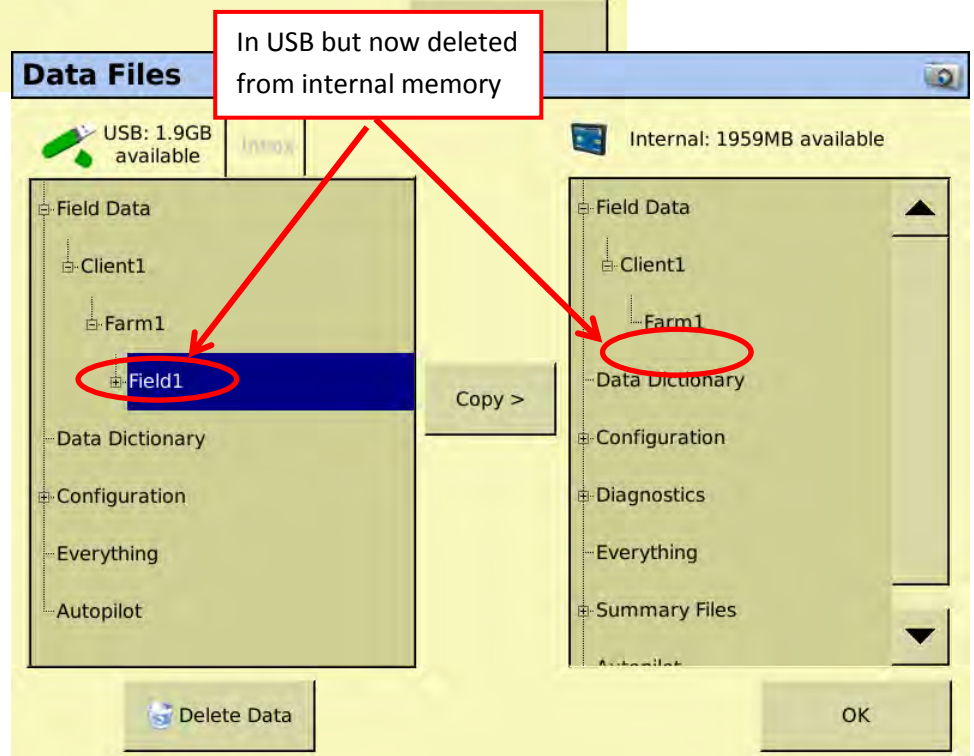
area & line features

The next step is to delete the field from your display so that the modified files on your USB can be reinstalled back



Go to Data Files again on your home screen and touch on delete.

Ensure you are on the Internal Tab at the top and then drill down till you find your field and highlight it as per above. Delete that field only



Go back to your Data Files screen and you can now see that the USB structure on the left still has our modified field in it, but we don't have the field in the internal memory (screen) at the right as we've deleted it.

Highlight the field on our USB and touch copy and it will copy our modified file in the USB across to our internal memory of the screen.

