

Changing Vehicle Files in a FM1000

When you change your FM1000 between vehicles, you will need to tell the system what vehicle is installed into it. O'Connors will have set it up for each different vehicle you intend to swap your display to, but there will be a few things that you will need to do to make it work between vehicles.

- Change the vehicle file
- Change aggressiveness – see Appendix at back for how to find the aggressiveness settings and you should note them for each vehicle
- Perform a roll cal.

When you start your display, you will be taken to the home screen

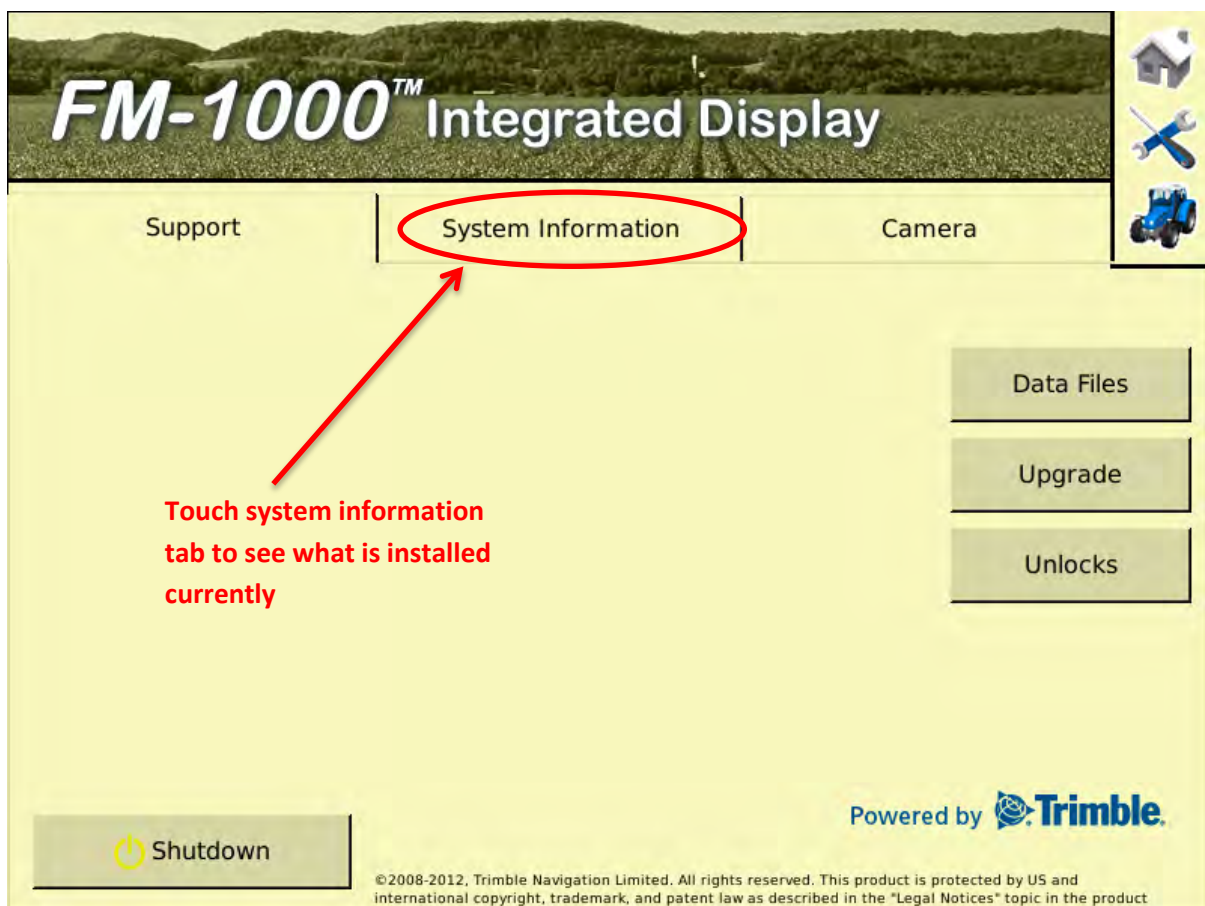


Figure 1 - Home Screen

This will bring up the System Information. From here you can see which vehicle is currently loaded. Don't get confused with the name. This is a configuration file name only and can have lots of numbers in it. In this case it means it will cover all combines between 7010 to a 9120. ie CaseIH machine, AG for agricultural and 7010, 8010, 7120, 8120 & 9120. So you may not actually see your number of your machine, but it is in there.

To change the vehicle, press on the Tools button in the right hand top corner to get to the Configuration Screen.

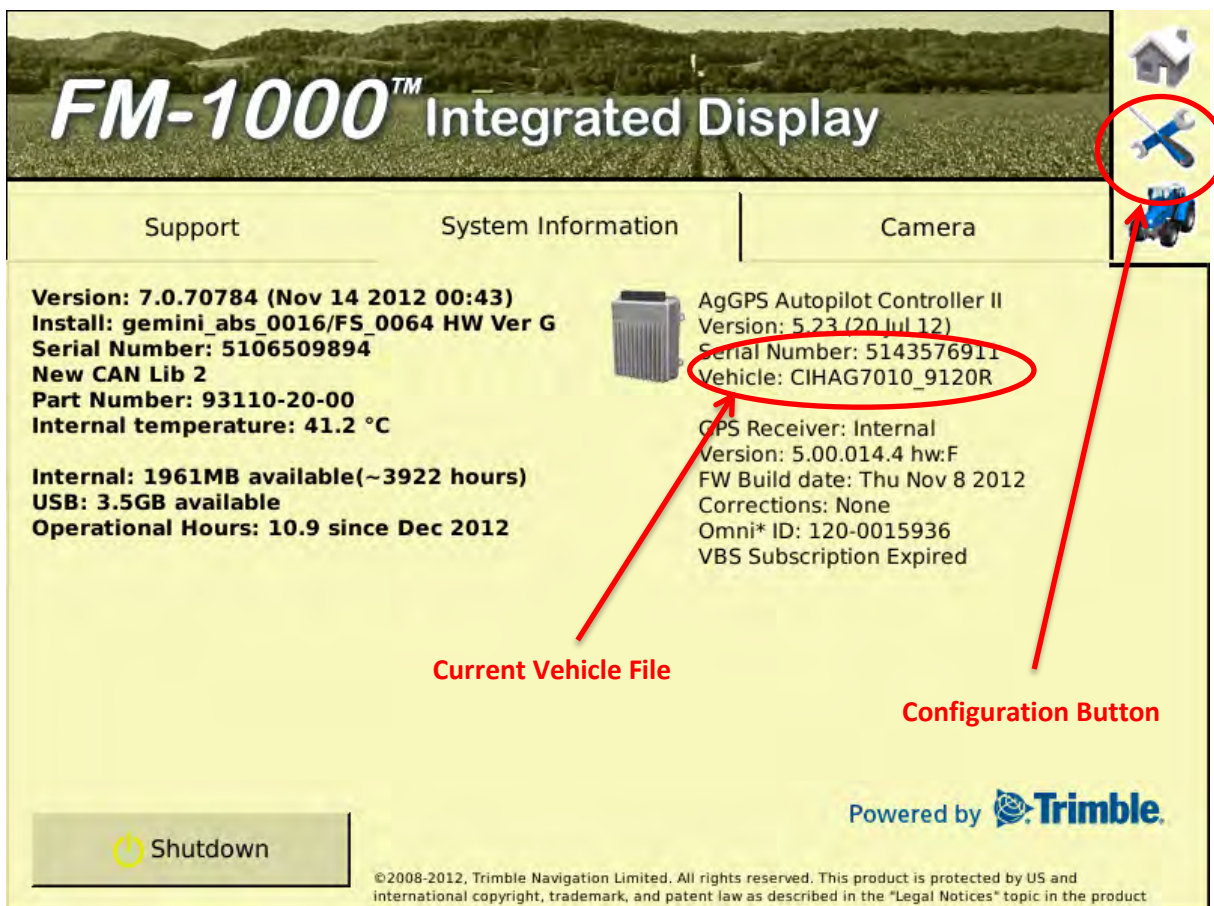


Figure 2 - System Information Screen

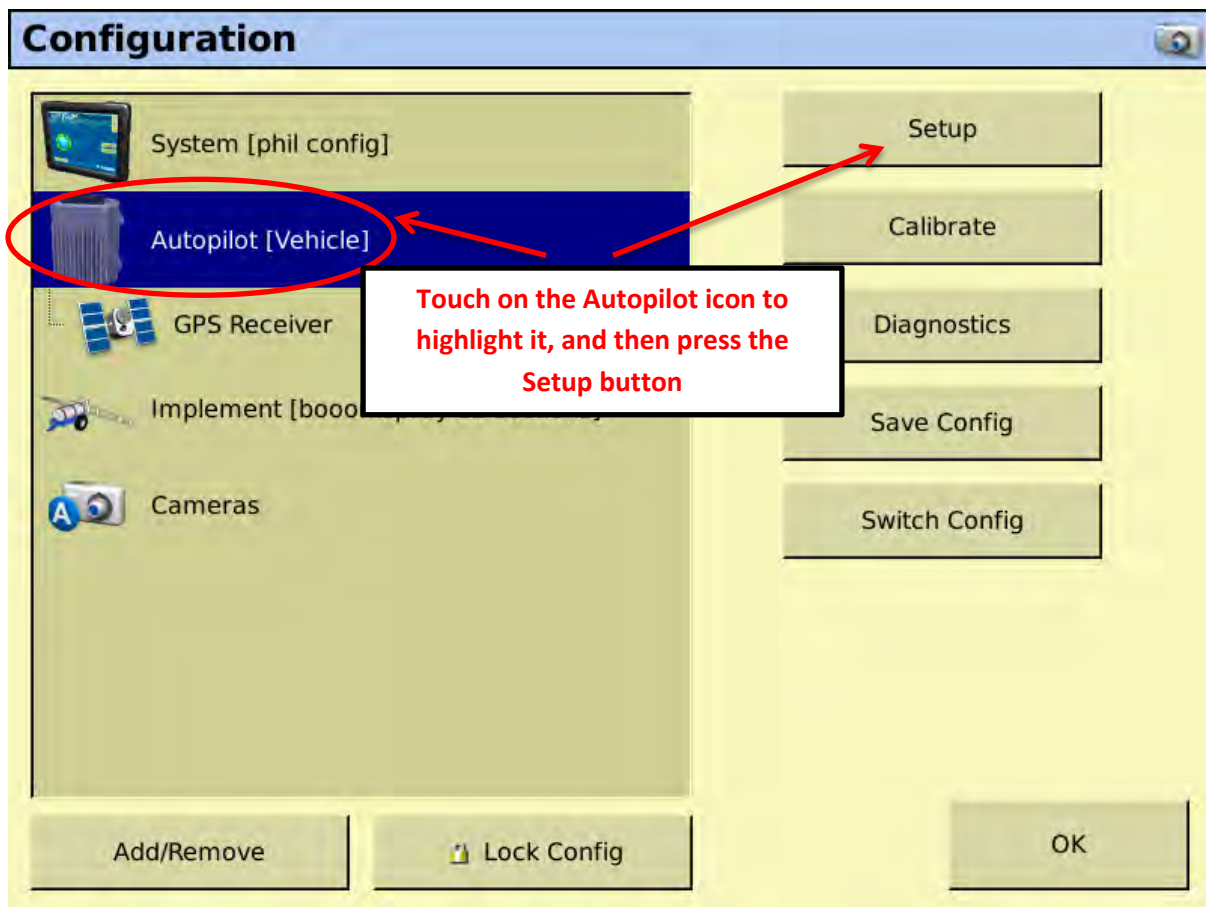


Figure 3 - Configuration Screen

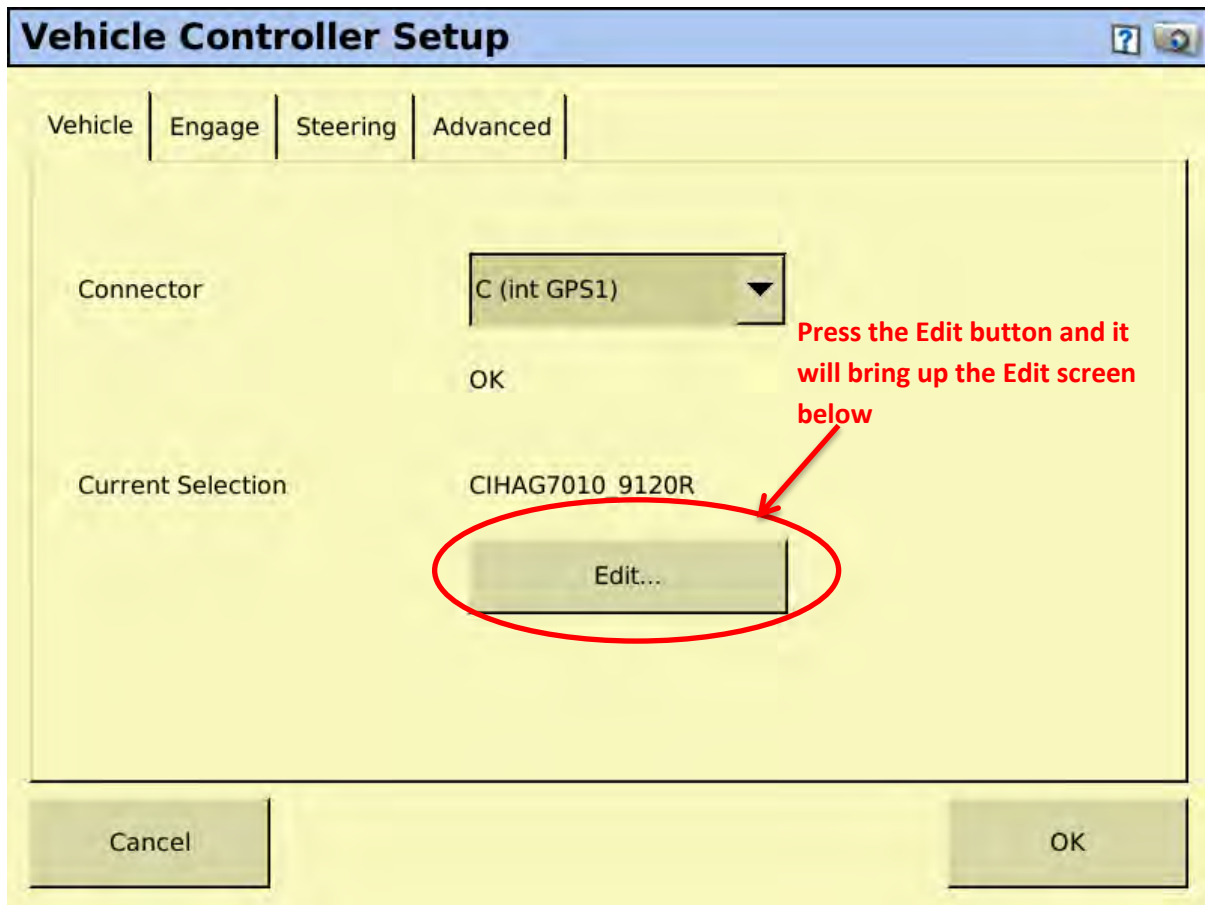


Figure 4 – Vehicle controller setup screen

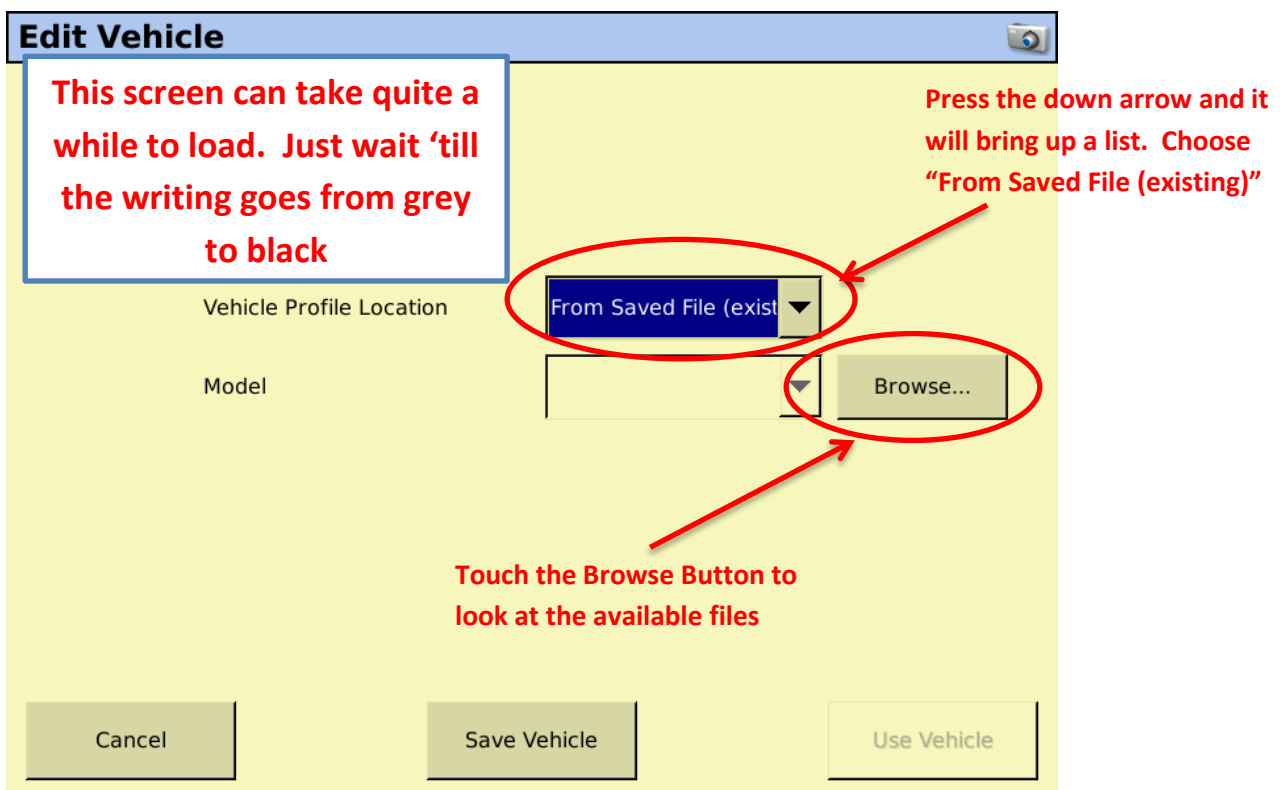


Figure 5 - Edit Vehicle Screen

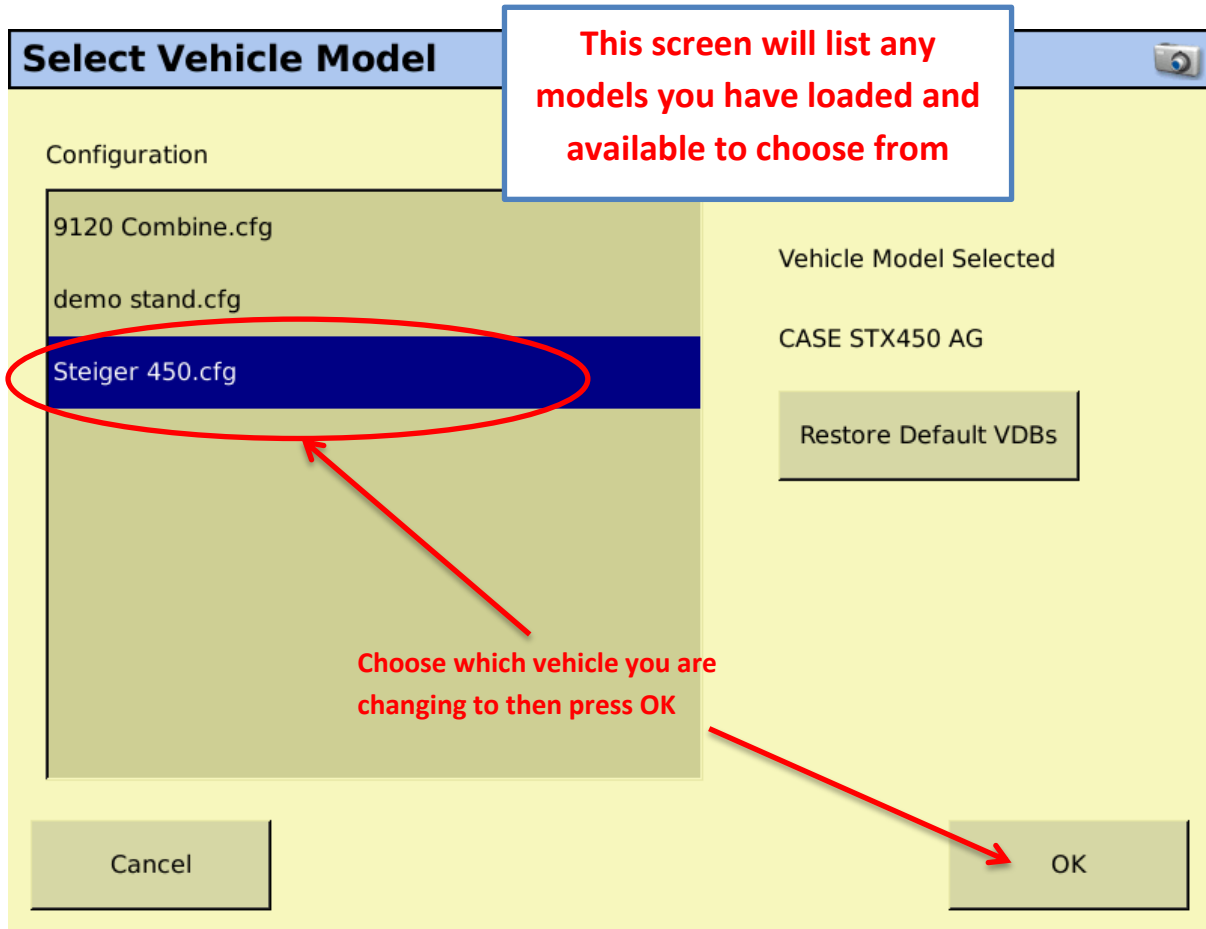


Figure 6 - Select Vehicle Model Screen

Edit Vehicle

Vehicle Profile Location: From Saved File (exist)

Model: CASE STX450 AG [Browse...]

Buttons: Cancel, Save vehicle, Use Vehicle

Warning – touching the “Save Vehicle” button can overwrite the original file and require a technician to reinstall the files and calibrate the system. This is not a warranty issue

Touch the “Use Vehicle” button to accept the vehicle file and use it.

You will get some warning screens to ensure you really want to change the vehicle file – accept these and you will see a pop up box saying that the file upload is complete once this has happened.

Press OK to finish with the vehicle controller setup page and it will take you back to the configuration screen.

Press OK as you have finished with the configuration screen. This will take you back to the home screen.

Power off the unit and **re-start**

Press on the Information tab again and you will see that the Autopilot is now configured for your required vehicle.

The only thing you have to do now is to perform a “roll cal” to be able to start using your autosteer.

You may also have to change the RTK ID number that you are working off if you can't receive RTK corrections.

Appendix

Setting/finding the aggressiveness settings

